

Spring 2015 Final Exams

Scenario Results

February 10, 2015

Summary

Spring 2015 Data

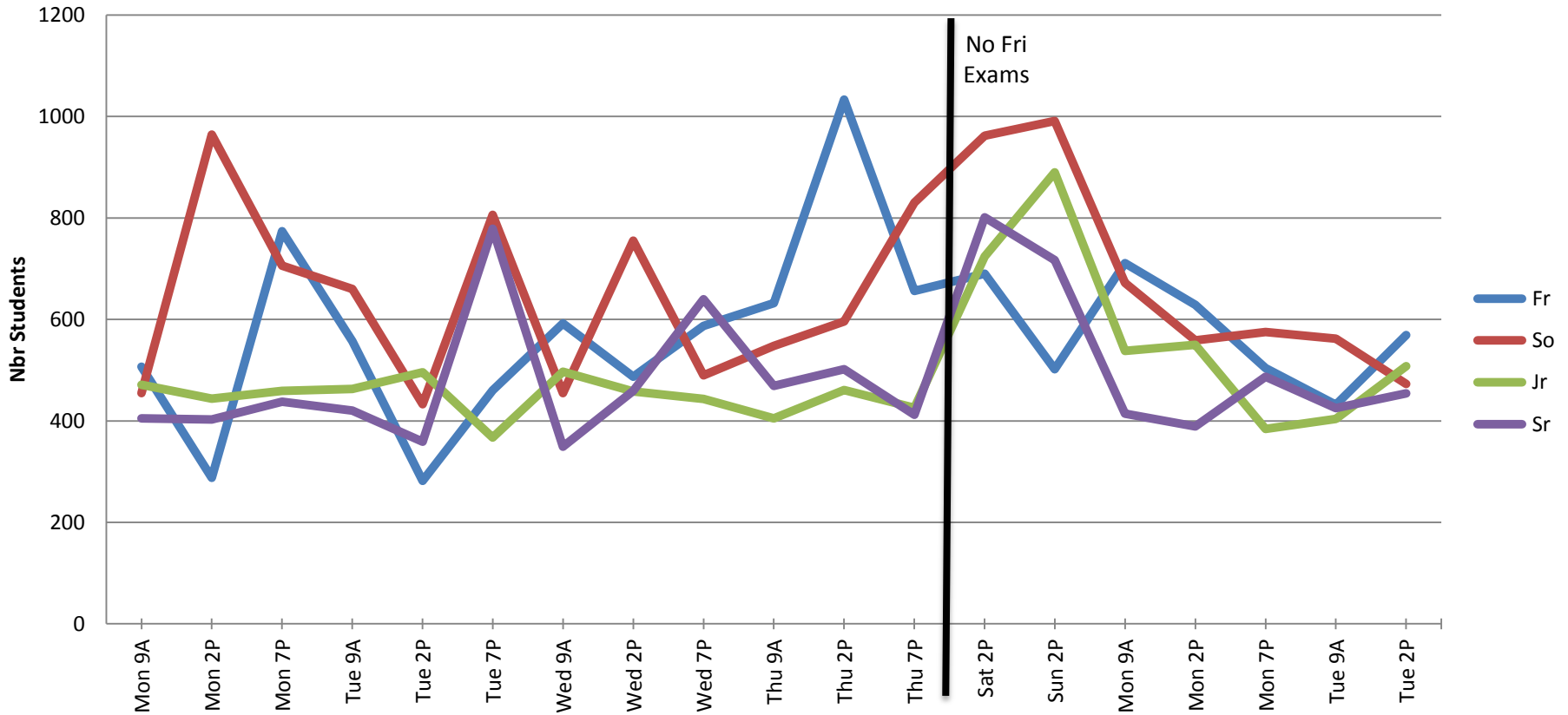
	<u>Scenario 1</u> Balanced		<u>Scenario 2</u> Large Exams* Minimized on Last 2 Days		<u>Scenario 3</u> Minimize Back-to-Back	
	Weight	Students	Weight	Students	Weight	Students
Direct Time Conflicts	100	140	70	143	70	232
3 exams in 24 hours	70	317	60	310	60	301
3 exams on same day	10	134	10	105	10	116
Back-to-Back exams	60	2852	20	3098	100	2638

* Exams > 350 students

Balanced

Academic Level by Exam Period

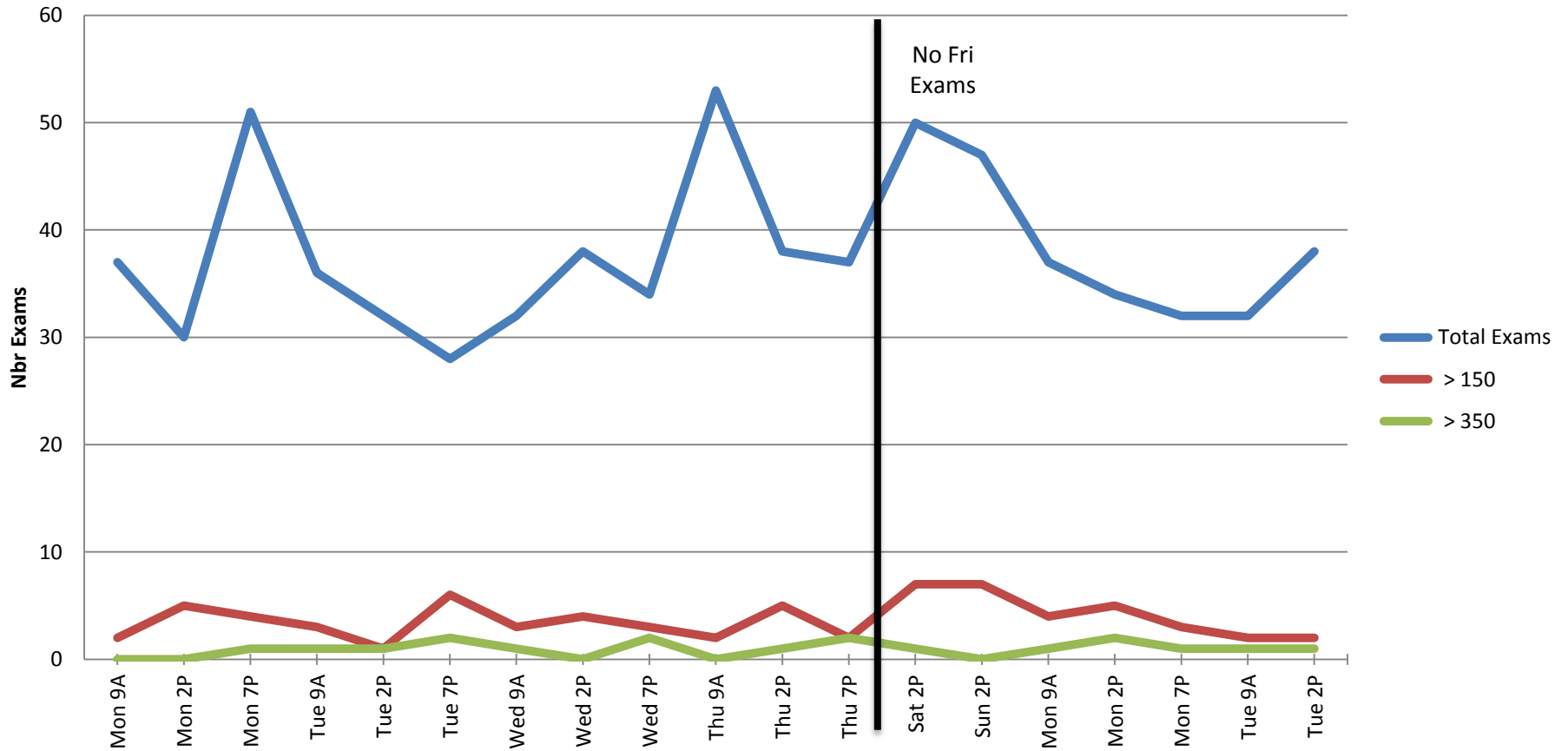
Scenario 1: Balanced



Balanced

Exam Counts by Exam Period

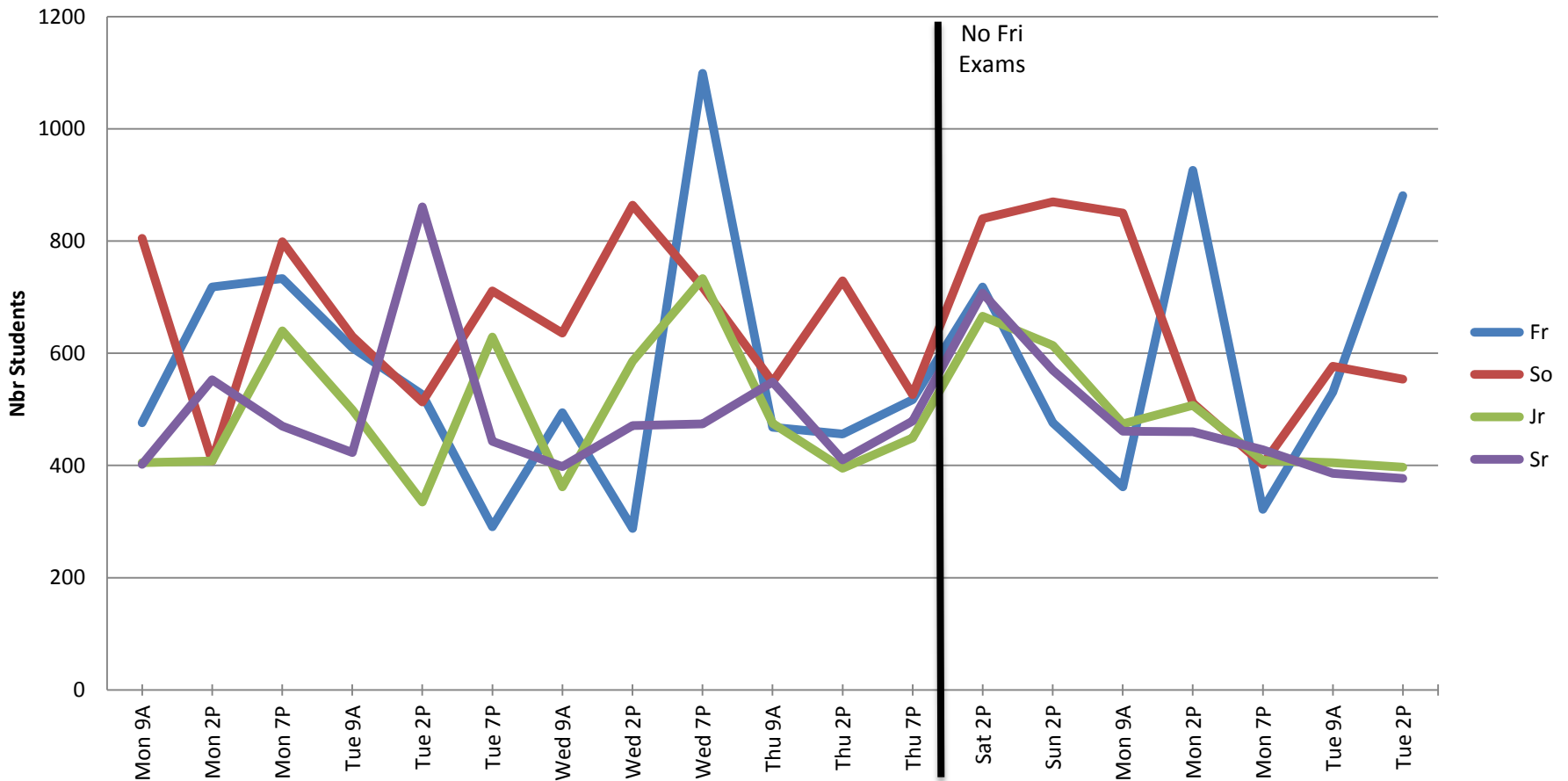
Scenario 1: Balanced



Minimize Exams [> 350] Last 2 Days

Academic Level by Exam Period

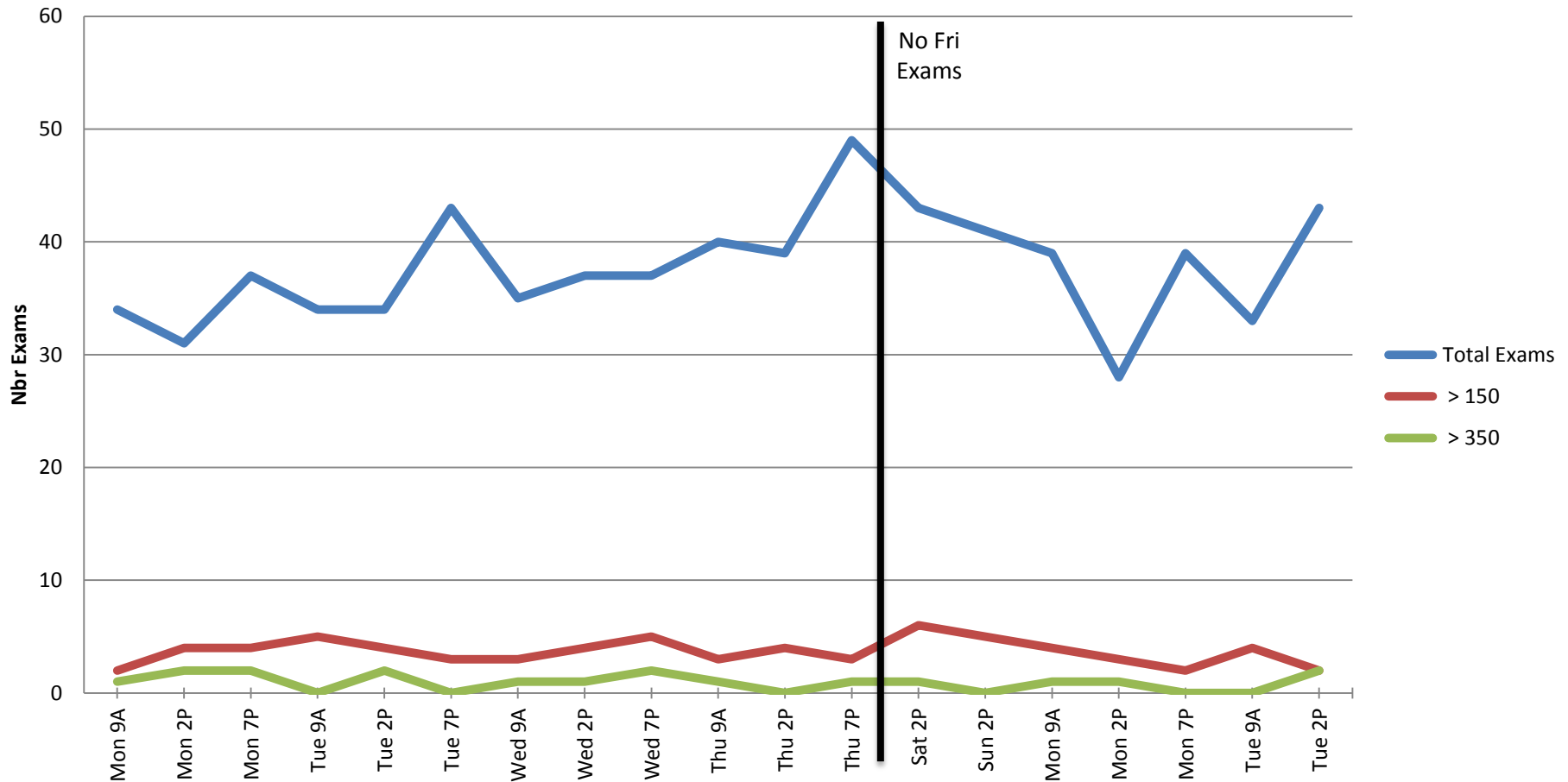
Scenario 2: Large Exams Minimized on Last 2 Days



Minimize Exams [> 350] Last 2 Days

Exam Counts by Exam Period

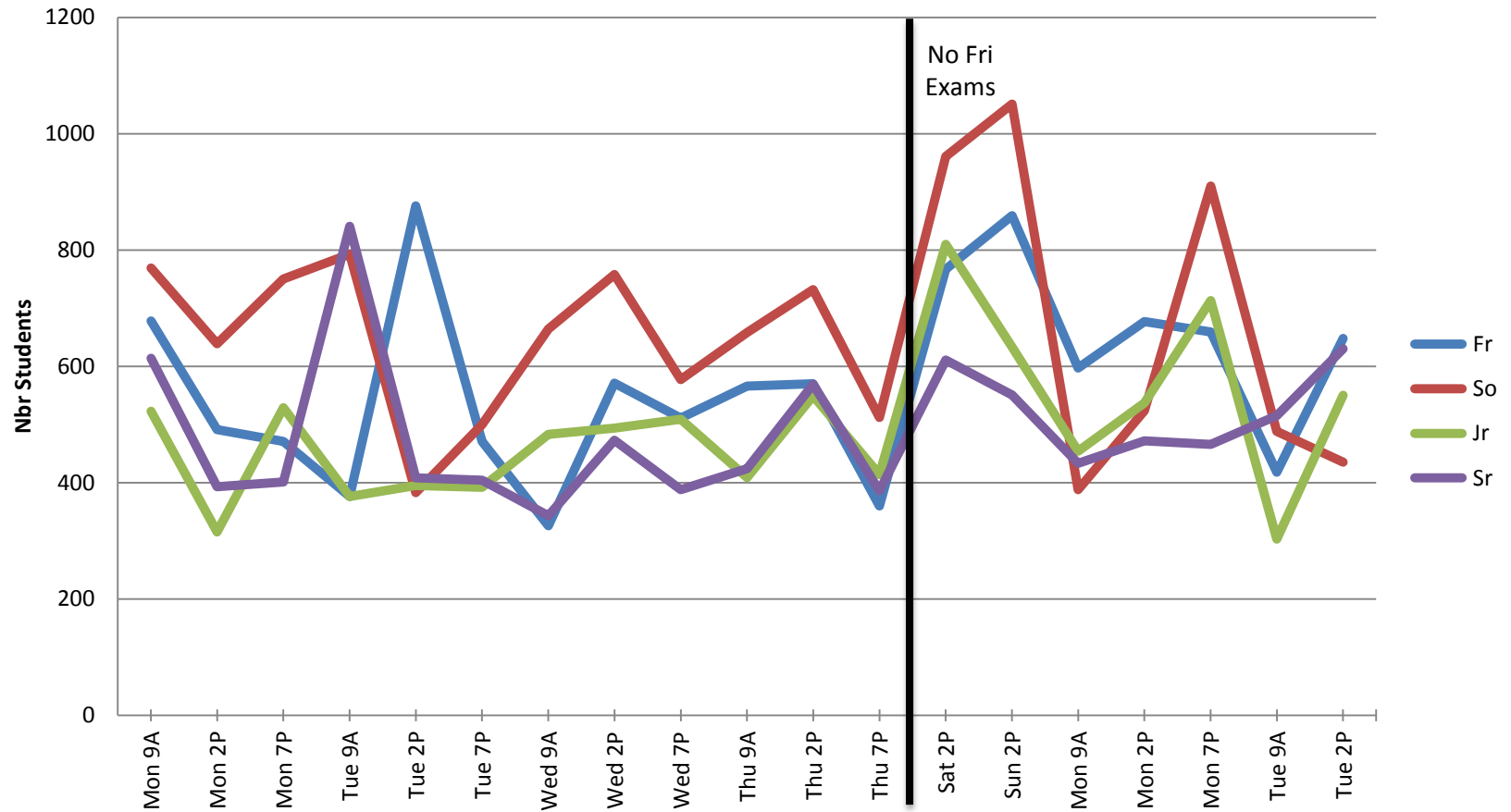
Scenario 2: Large Exams Minimized on Last 2 Days



Minimize Back-to-Back

Academic Level by Exam Period

Scenario 3: Minimize Back-to-Back



Minimize Back-to-Back

Exam Counts by Exam Period

Scenario 3: Minimize Back-to-Back

