

---

# Cornell/Community Transportation Initiatives Update

Transportation Services

December 2009

---

# Cornell/Community Transportation Initiatives

---

## **Critical principles:**

- Benefit to Cornell
- Adjacency
- Improve wellness and life safety
- Sustainability
- Leverage funds

# Cornell/Community Transportation Initiatives

---

- **TDMP enhancements**
- **Bike and pedestrian safety**
- **Other infrastructure improvements**

# Cornell/Community Transportation Initiatives

---

- **TDMP enhancements**
- Bike and pedestrian safety
- Other infrastructure improvements

# TDMP Enhancements

---

- TCAT Community Vanpool
- Ithaca Carshare, Inc.
- Community Park-and-Ride System

# TDMP Enhancements

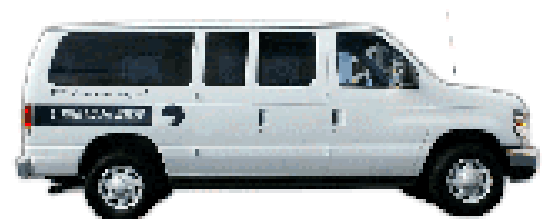
## TCAT Community Vanpool



# TCAT Community VanPool

## How much does it cost? It depends...

- The price of a van is determined by the type and size of the vehicle and your monthly mileage allowance.
- The passengers split the cost equally (typically *excludes* driver/coordinator).
- The more people who participate in the van, the lower the per person cost.
- Cost estimates are available from VPSI.



# VanPool

Get the Skinny on Savings!

	20 miles R/T	30 miles R/T	40 miles R/T	50 miles R/T	60 miles R/T	70 miles R/T	80 miles R/T	90 miles R/T
5 passengers	\$95	\$107	\$120	\$127	\$141	\$158	\$171	\$188
6 passengers	\$76	\$86	\$96	\$102	\$114	\$129	\$139	\$153
7 passengers	\$62	\$71	\$80	\$85	\$95	\$107	\$117	\$128
8 passengers	\$56	\$65	\$73	\$79	\$89	\$100	\$109	\$120
9 passengers	\$49	\$55	\$63	\$68	\$77	\$86	\$95	\$104
10 passengers	\$44	\$50	\$59	\$64	\$73	\$82	\$91	\$101
11 passengers	\$38	\$44	\$52	\$56	\$65	\$73	\$80	\$90
12 passengers	\$33	\$39	\$46	\$50	\$58	\$65	\$72	\$81
13 passengers	\$31	\$37	\$45	\$49	\$54	\$60	\$67	\$75
14 passengers	\$28	\$33	\$40	\$44	\$49	\$55	\$61	\$68

*R/T = Round Trip*

**Assumptions:**

- Fees are per person, per month, and include fuel.
- Prices calculated with fuel at \$2.75/gallon
- Prices assume eligible Cornell participants have received the \$20 monthly sponsorship subsidy.
- New York State taxes for vans holding less than 10 people can be reduced by 5%. Speak with a VPSI rep for more details.

**1-800-VANRIDE • [www.vanride.com](http://www.vanride.com)**



# TCAT Community Vanpool

---

## **What are the benefits?**

- Eligible Cornell participants receive a \$20/month subsidy
- Free, reserved parking on the Cornell campus.
- A book of ten perimeter parking permits every six months
- Free emergency ride home
- Free TCAT 10-ride pass, in addition to CU ID bus privileges
- Free Ithaca Carshare membership
- Free tote bag (while supplies last)

# TDMP Enhancements

## Ithaca Carshare, Inc.

- Leveraged NYSERDA award
- Start-up funding from CU and IC
- Free memberships for faculty and staff in TDM programs
- Discounted memberships for all other faculty and staff
- Free memberships for students
- 13 vehicles located throughout Ithaca
- Total membership is 740
- 332 members are affiliated with Cornell

*Hourly use of a new car located near you. We pay for the gas, upkeep, parking, and insurance. You only pay to drive!*



*What could you use a car for?*

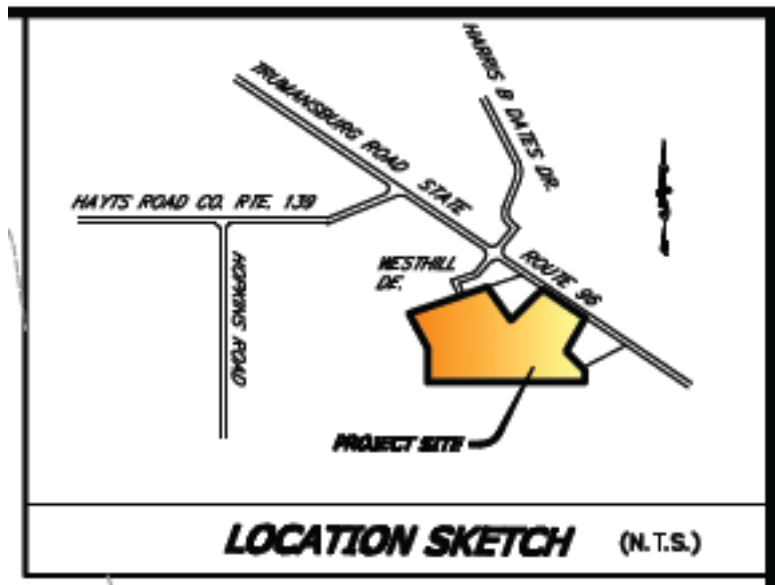
# TDMP Enhancements

---

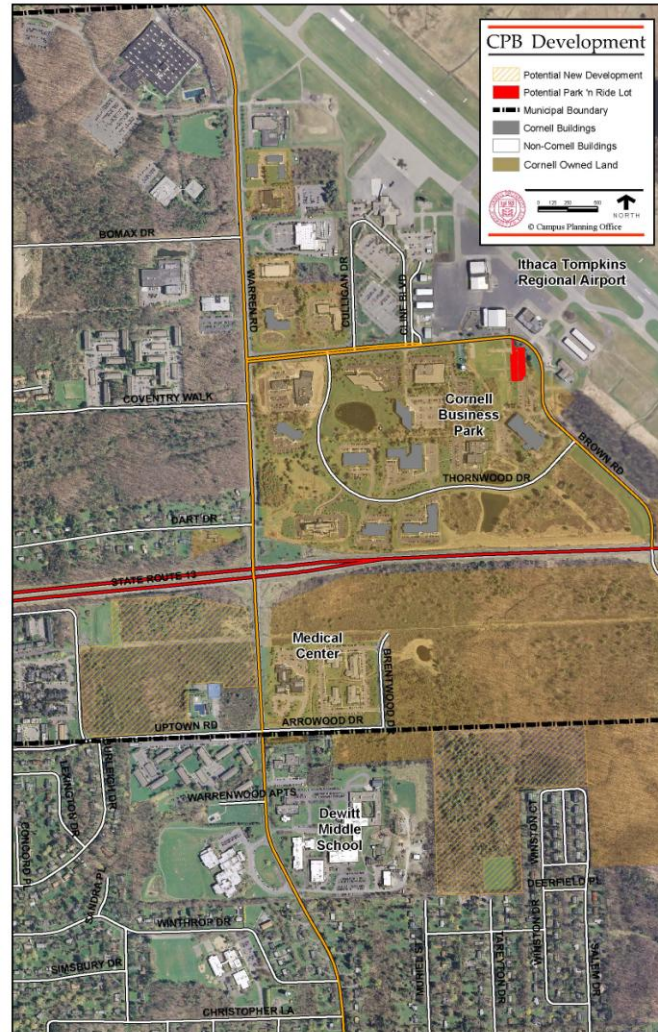
## **Community Park-and-Ride System**

- West Hill (off Route 96)
- Northeast (near Business and Technology Park)

# West Hill Park and Ride



# Northeast Park and Ride



# Cornell/Community Transportation Initiatives

---

- TDMP enhancements
- **Bike and pedestrian safety**
- Other infrastructure improvements

# Bike/Pedestrian Safety

---

- Columbia Street pedestrian bridge
- Pine Tree Road improvements
- Bluegrass Lane improvements (Sapsucker Woods to Campus)



# Cornell/Community Transportation Initiative

Intersection or Bridge Improvement

1 Bike/Pedestrian Safety Improvements

2 Infrastructure Improvements

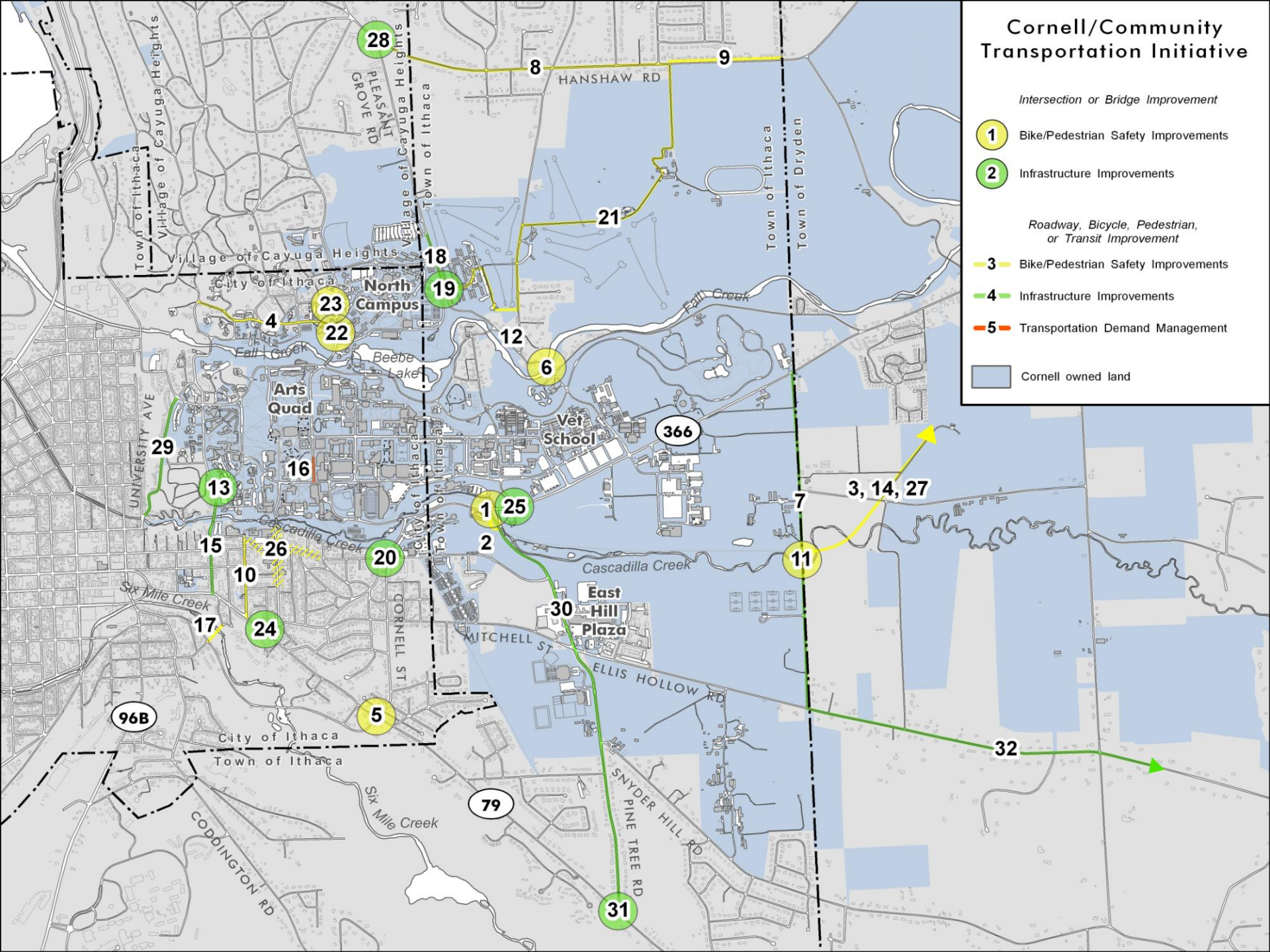
Roadway, Bicycle, Pedestrian, or Transit Improvement

3 Bike/Pedestrian Safety Improvements

4 Infrastructure Improvements

5 Transportation Demand Management

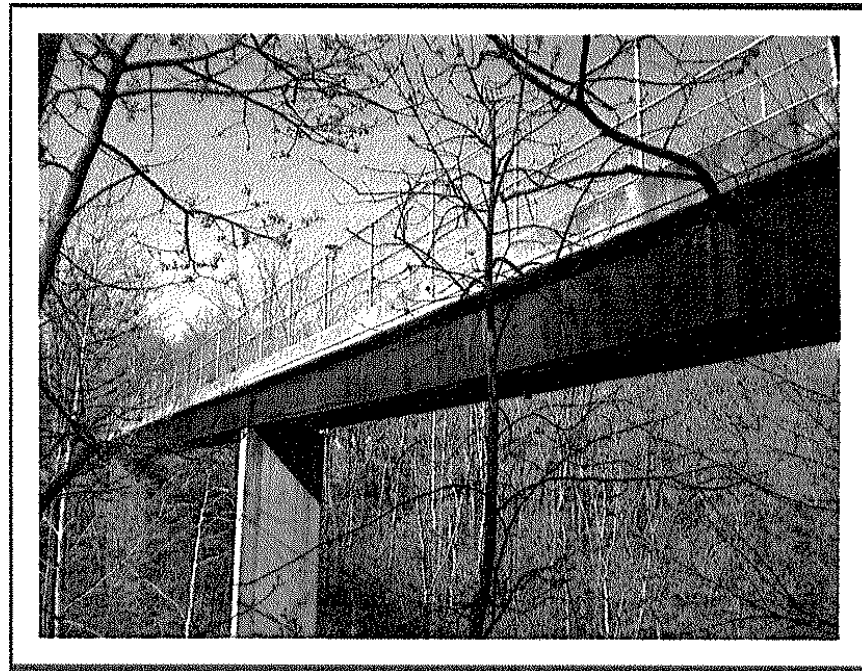
Cornell owned land





# Columbia Street Pedestrian Bridge

---

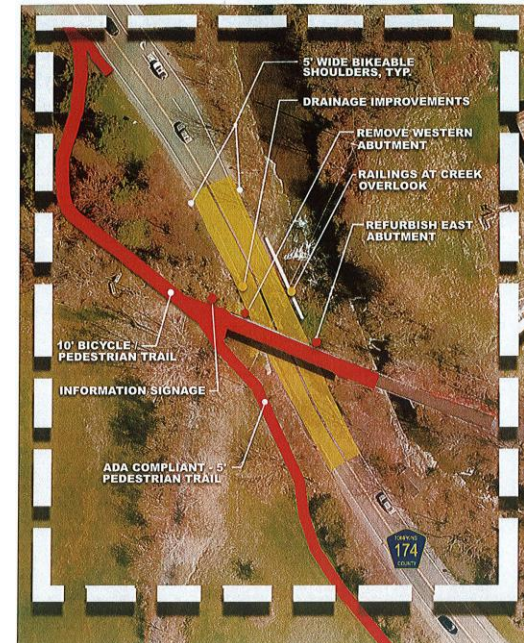
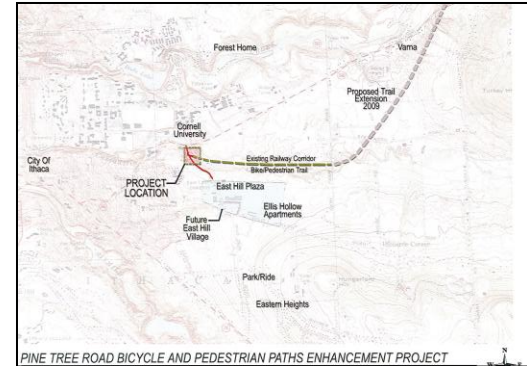


# Pine Tree Road Improvements

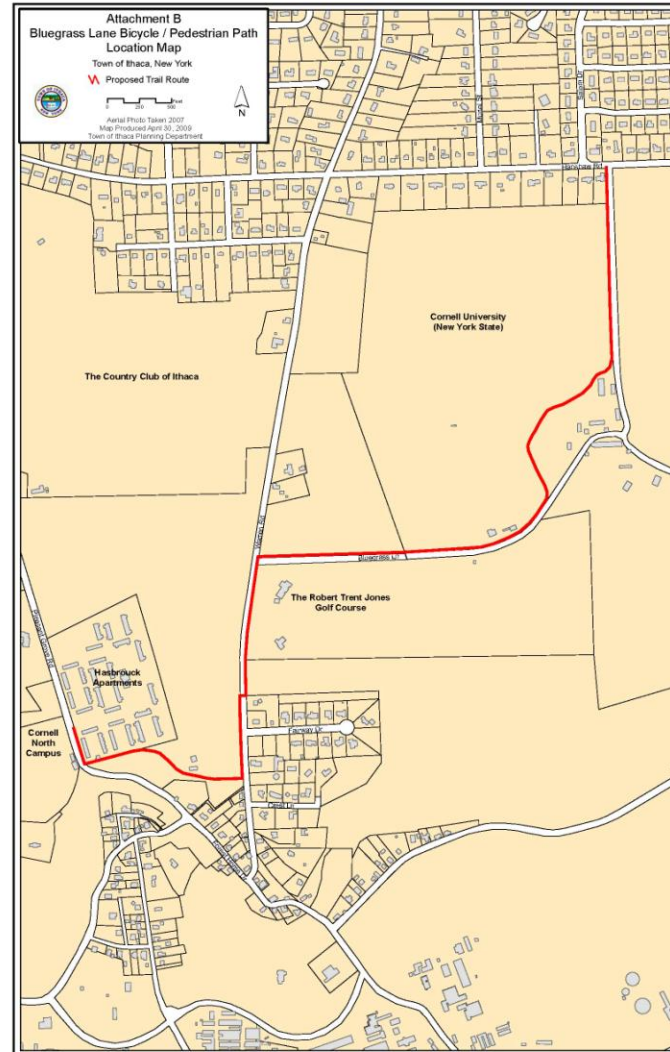
Existing Bridge



McFarland Johnson | Trowbridge & Wolf



# Blue Grass Lane Improvements



# Cornell/Community Transportation Initiatives

---

- TDMP enhancements
- Bike and pedestrian safety
- **Other infrastructure improvements**

# Other Infrastructure Improvements

---

- Game Farm Road reconstruction
- Forest Home upstream bridge
- Forest Home traffic calming



# Cornell/Community Transportation Initiative

Intersection or Bridge Improvement

1 Bike/Pedestrian Safety Improvements

2 Infrastructure Improvements

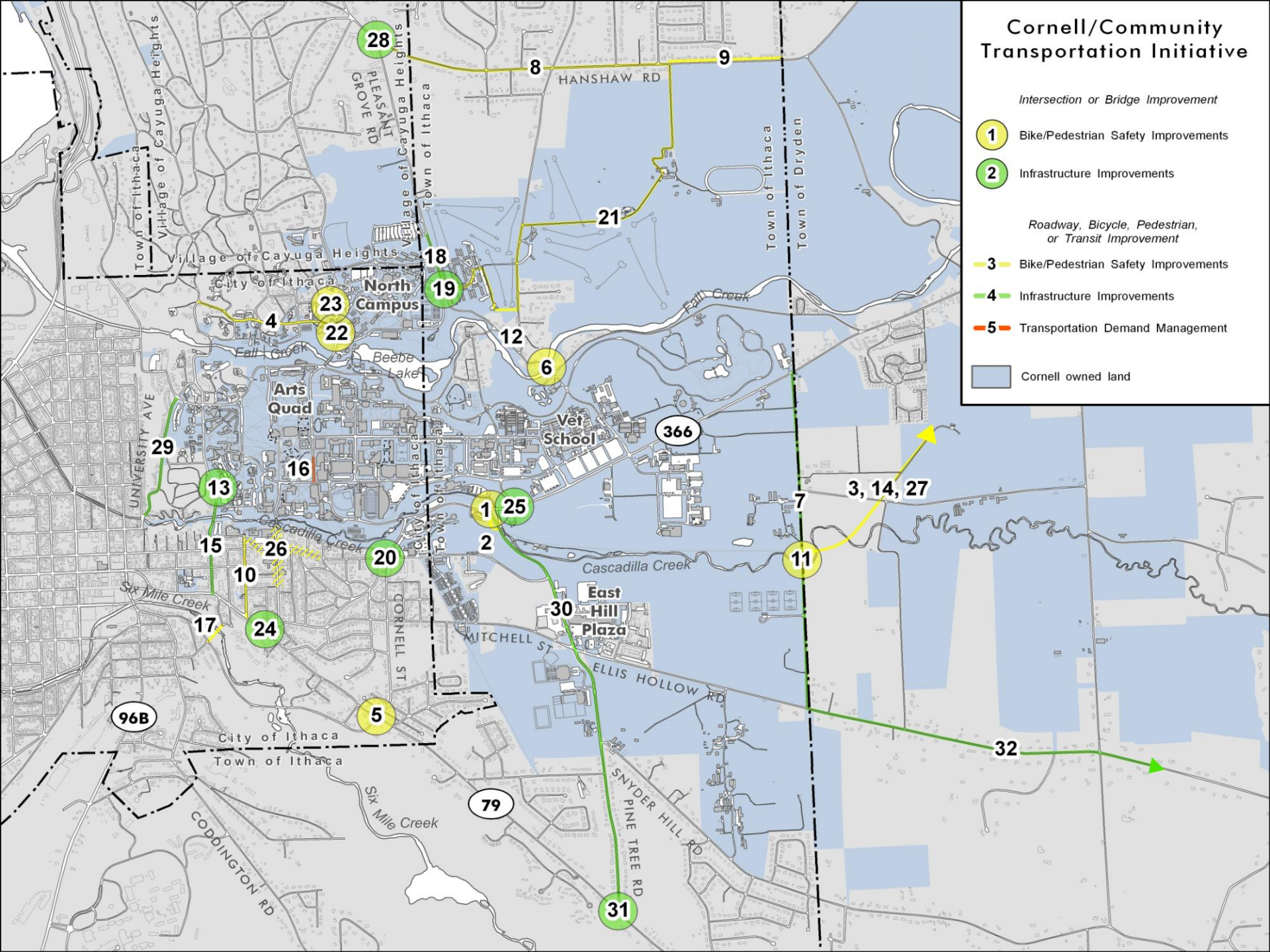
Roadway, Bicycle, Pedestrian, or Transit Improvement

3 Bike/Pedestrian Safety Improvements

4 Infrastructure Improvements

5 Transportation Demand Management

Cornell owned land

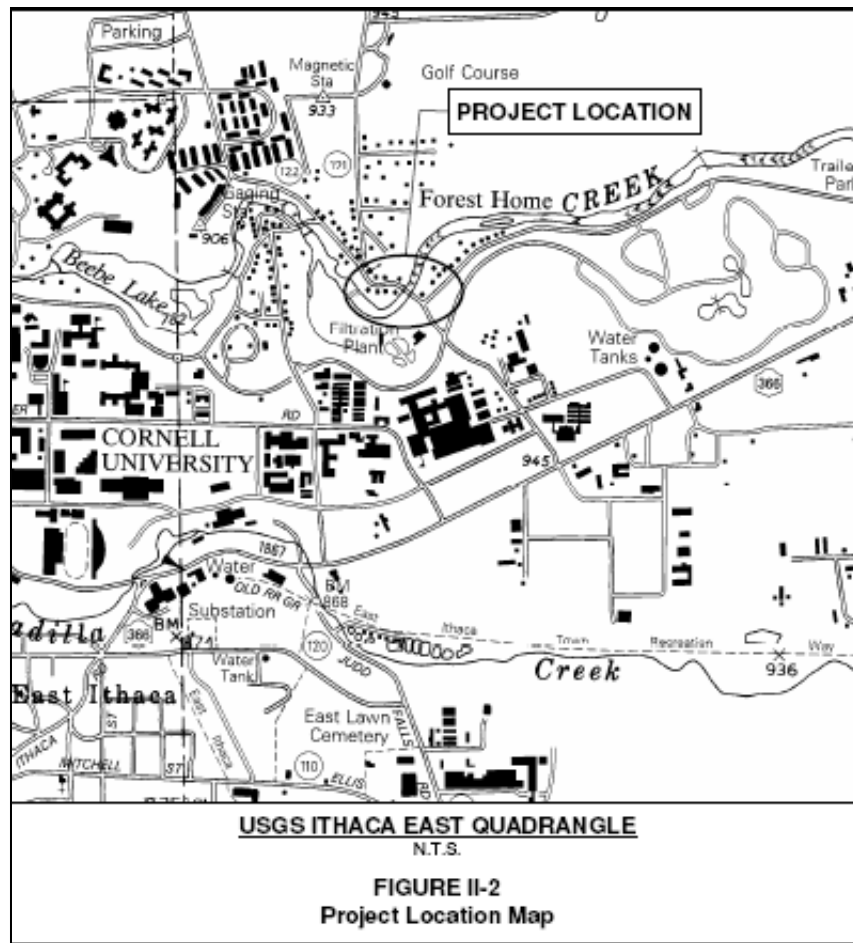


# Game Farm Road Reconstruction





# Forest Home Upstream Bridge





# Forest Home Traffic Calming

